



Brandon Whitehead
Candidate Property
Practitioner
Registered with PPRA
(FFC 121 151 9)
0817743977

brandon@newpointproperty.co.za

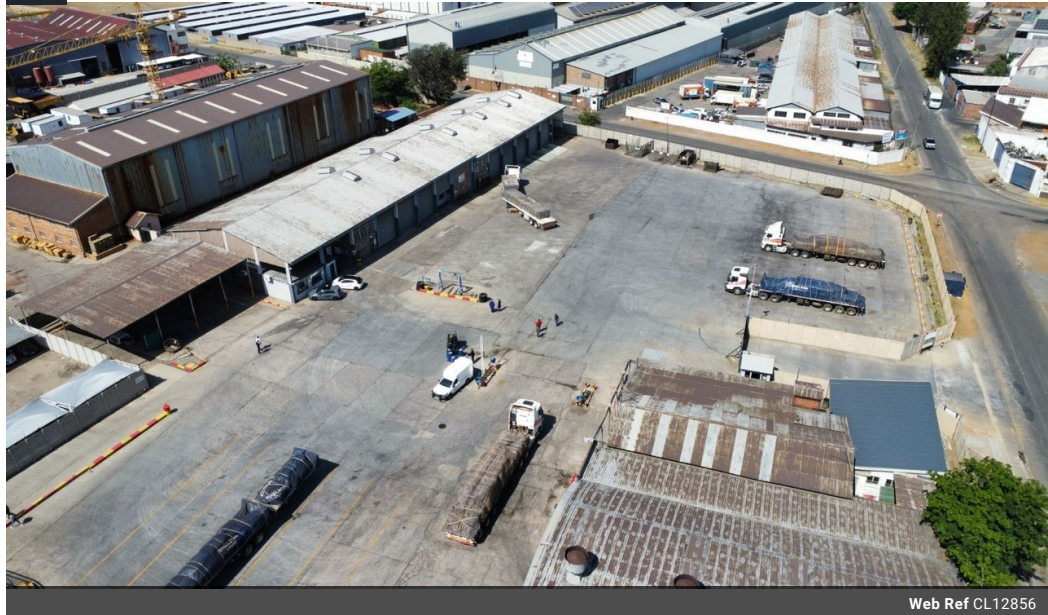
Contact Head Office

010 0354431

Office 40A
Eden Meadows Complex
1 Van Riebeeck Avenue
Greenstone
1609

1,800m² Workshop To Let in Henville

NEW



Web Ref CL12856



R210,000 pm

Gross Monthly Rental R210,000 Excl. VAT

10 300

Top-Tier Truck Workshop with Massive Yard – Ideal for Fleet Maintenance Operations

Boost your fleet servicing capabilities with this fully equipped 1,800m² truck workshop, set on a sprawling 7,200m² paved yard tailored for large vehicle operations. Featuring 9 work bays, a wash bay, and 5 service pits, the facility is built for seamless super-link access and efficient workflow. A powerful 200-amp, three-phase supply supports intensive maintenance needs, while secure perimeter fencing ensures peace of mind.

Natural lighting floods the workspace, promoting a productive environment for your team. Strategically positioned near the Kraft Road on-ramp, the property offers quick access to the N12 highway, making it a prime location for logistics and transport businesses. Whether you're expanding or upgrading your operations, this high-spec facility delivers the space, infrastructure, and

Features

Zoning Industrial

Interior

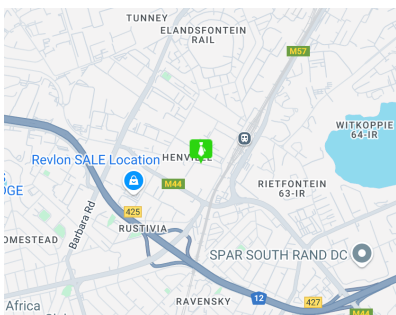
Air Conditioning	Yes
Power 3 Phase	Yes
Power Amps	200

Exterior

Covered Parking Bays	10
Open Parking Bays	300

Sizes

Floor Size	1,800m ²
Land Size	9,000m ²
Building Height	8m



<https://www.newpointproperty.co.za>