



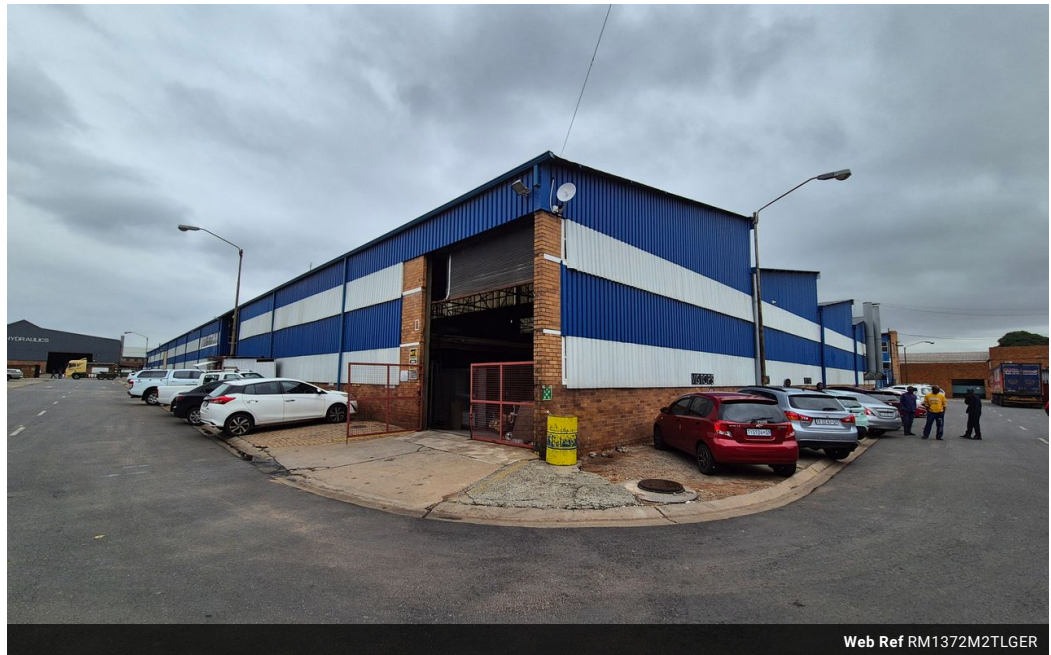
Robin Mulligan
 Candidate Property Practitioner
 Registered with PPRA
 (FFC 121 152 0)
 0713556301

robin@newpointproperty.co.za

Contact Head Office

010 0354431

Office 40A
 Eden Meadows Complex
 1 Van Riebeeck Avenue
 Greenstone
 1609



Web Ref RM1372M2TLGER



R63,800 pm

Gross Monthly Rental R63,800 Excl. VAT

0 20

1372m² Warehouse available To Let in Driehoek, Germiston.

1372m² Warehouse available To Let in Driehoek, Germiston. This warehouse is centrally located and offers easy access to all major highways. The warehouse offers excellent height with good natural light and a 3 phase power supply, access to the warehouse for large trucks is made easy via a large private fully paved yard area measuring approximately 1000m² and 3 large roller shutter doors. The warehouse also has access from two different roads and can accommodate super link trucks.

there is 24 hour security in place that patrols the entire block. Public transport and shopping facilities are within walking distance

Features

Zoning Industrial

Interior

Power 3 Phase	Yes
Power Amps	250

Exterior

Security	Yes
Open Parking Bays	20

Sizes

Floor Size	1,372m ²
Land Size	2,500m ²
Building Height	7m

