



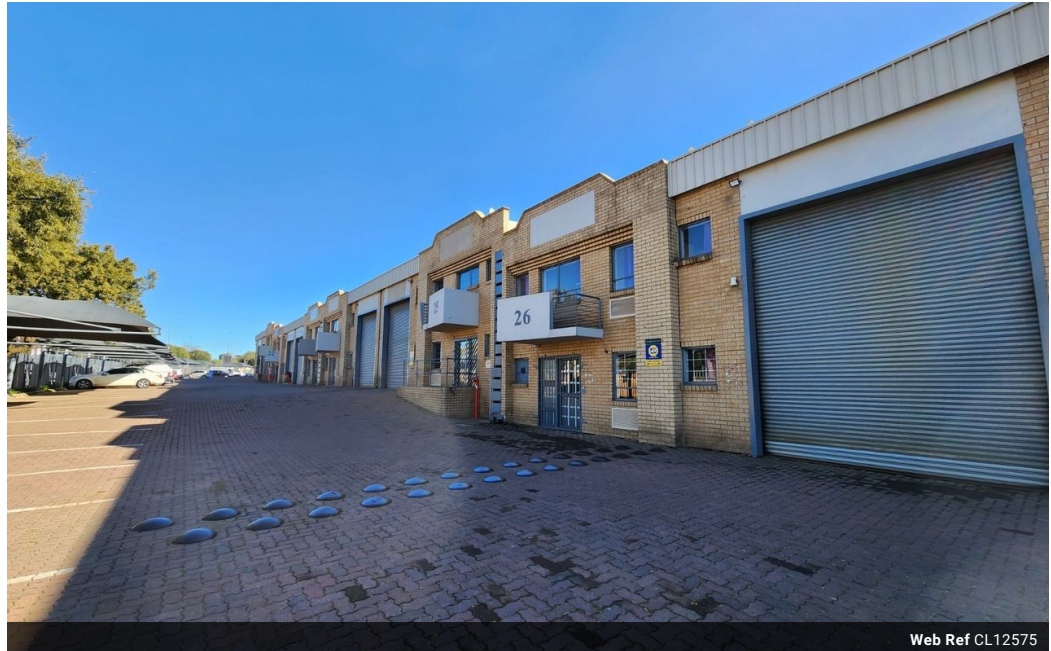
Robin Mulligan
 Candidate Property Practitioner
 Registered with PPRA
 (FFC 121 152 0)
 0713556301

robin@newpointproperty.co.za

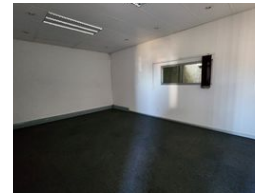
Contact Head Office

010 0354431

Office 40A
 Eden Meadows Complex
 1 Van Riebeeck Avenue
 Greenstone
 1609



Web Ref CL12575



R17,490 pm

Gross Monthly Rental R17,490 Excl. VAT

4 6

Secure & Well-Located 265m² Warehouse in Driehoek, Germiston

This immaculate 265m² warehouse in Driehoek, Germiston, is available for lease in a secure industrial complex with 24/7 security and access control. Conveniently situated near major highways, the property ensures seamless truck access and traffic flow, with public transport and shopping amenities nearby. Featuring high ceilings with ample natural light, a large roller shutter door for easy loading, and a 63-amp three-phase power supply, this warehouse is ideal for manufacturing, storage, or logistics operations.

The two-level office component includes a welcoming reception area, open-plan offices, a kitchenette, and ablution facilities on both floors. With great visibility from the main road and ample parking for staff and visitors, this secure, well-equipped property is a

Features

Zoning Industrial

Interior

Power 3 Phase Yes
 Power Amps 63

Exterior

Security Yes
 Covered Parking Bays 4
 Open Parking Bays 6

Sizes

Floor Size 265m²
 Land Size 365m²
 Building Height 7m

