



William Christie
Candidate Property
Practitioner
Registered with PPRA
(FFC 121 152 2)
0740552244

william@newpointproperty.co.za

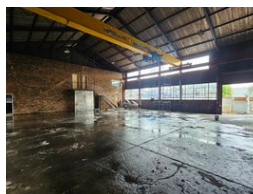
Contact Head Office

010 0354431

Office 40A
Eden Meadows Complex
1 Van Riebeeck Avenue
Greenstone
1609



Web Ref CL12895



R25,000 pm

Gross Monthly Rental R25,000 Excl. VAT



Well-Equipped Engineering Facility with 10-Ton Crane in Delville, Germiston

This well-maintained industrial property in the popular Delville area of Germiston is now available to let, offering a prime solution for engineering or fabrication businesses. The facility has a powerful 10-ton overhead crane and 100 amps of three-phase power, ideal for handling heavy-duty operations. A large front-facing roller door provides seamless access to the workshop, while neat, professional offices create a comfortable administrative space for your team.

Additional features include staff ablution facilities and secure on-site parking, ensuring both convenience and peace of mind. Situated in a sought-after industrial hub with easy access to key routes, this property is perfectly positioned to support smooth

Features

Zoning Industrial

Interior

Floor Loading Cap.	10 Tn/m ²
Power 3 Phase	Yes
Power Amps	100

Sizes

Floor Size	450m ²
Land Size	600m ²
Building Height	8m

