



Robin Mulligan
 Candidate Property Practitioner
 Registered with PPR (FFC 121 152 0)
 0713556301

robin@newpointproperty.co.za

Contact Head Office

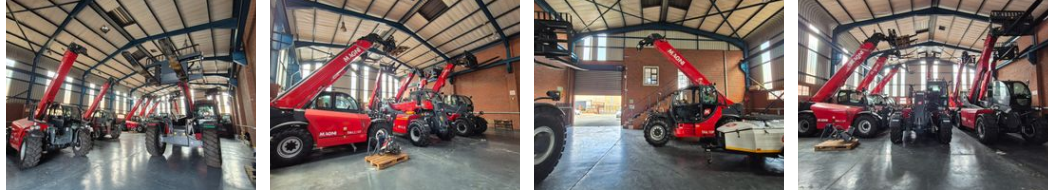
010 0354431

Office 40A
 Eden Meadows Complex
 1 Van Riebeeck Avenue
 Greenstone
 1609

NEW



Web Ref rm630m2lap



R50,000 pm

Gross Monthly Rental R50,000 Excl. VAT

6 6

630m² Warehouse available To Let in Airport Park, Germiston.

630m² Warehouse available To Let in Airport Park, Germiston. This warehouse is centrally located in Germiston near Rand Airport and offers easy access to all major highways. The warehouse offers excellent height with great natural light and a strong 3 phase power supply consisting of 160 amps. There is a large roller shutter door with a small private yard area allowing for excellent truck access and flow. The warehouse also features a full canteen area, with change rooms, ablutions and shower facilities.

The office component is very neat and well sized, its placed over two levels and includes a welcoming reception area with individual office spaces available on both levels. There are both male and female ablutions and a small kitchen area in place. This

Features

Zoning Industrial

Interior

Power 3 Phase Yes
 Power Amps 160

Exterior

Covered Parking Bays 6
 Open Parking Bays 6

Sizes

Floor Size 630m²
 Land Size 1,000m²
 Building Height 8m

