



**Tyrone Varga**  
Principal Property  
Practitioner  
Registered with PPRA  
(FFC 114 321 7)  
**072 869 3246**

[tyrone@newpointproperty.co.za](mailto:tyrone@newpointproperty.co.za)

Contact Head Office

**010 0354431**

Office 40A  
Eden Meadows Complex  
1 Van Riebeeck Avenue  
Greenstone  
1609

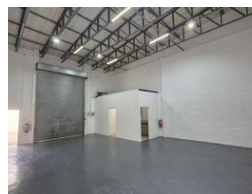
110m<sup>2</sup> Warehouse To Let in Eastleigh

NEW



SOLE MANDATE

Web Ref TV110TL



**R8,500 pm**

**Gross Monthly Rental** R8,500 Excl. VAT



0



2

## Neat mini unit To Let in Eastleigh

Neat and secure mini unit available to let in Eastleigh. This well-maintained warehouse offers excellent height and abundant natural lighting. The unit is equipped with 3-phase prepaid power, its own kitchen and toilet facilities, and two dedicated parking bays. Recently repainted, it presents a clean and professional appearance. Ideal for light industrial or storage use, the property is conveniently located near all major transport routes, ensuring easy access and great connectivity. A practical and efficient space in

## Features

**Zoning** Industrial

### Interior

Power 3 Phase	Yes
Power Amps	80

### Exterior

Open Parking Bays	2
-------------------	---

### Sizes

Floor Size	110m <sup>2</sup>
Land Size	900m <sup>2</sup>

