



Marcel Carneiro
 Candidate Property Practitioner
 Registered with PPRA (FFC 120 075 3)
 0846932233
marcel@newpointproperty.co.za

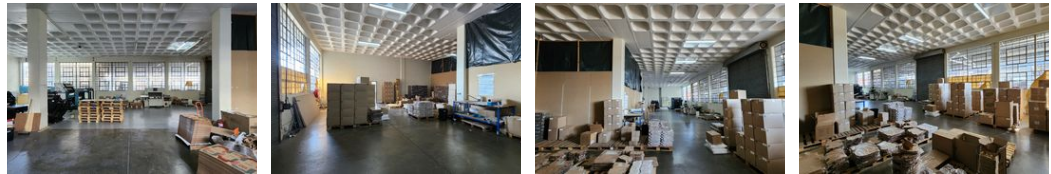
Contact Head Office

010 0354431

Office 40A
 Eden Meadows Complex
 1 Van Riebeeck Avenue
 Greenstone
 1609



Web Ref CL12265



R56,500 pm

Gross Monthly Rental R56,500 Excl. VAT

0 6

Prime 1,130m² Industrial Warehouse for Lease in Eastleigh

This well-maintained 1,130m² industrial warehouse in Eastleigh offers the perfect setup for a variety of business operations. The double-story facility is designed for efficiency with two ground-floor roller shutter doors and second-floor hanger doors, complemented by a 2-ton goods hoist for smooth stock handling. With high eaves and abundant natural light, the warehouse creates a bright, spacious workspace. Equipped with 250 amps of three-phase power, it's ready to support a range of industrial activities.

The office component is equally functional, featuring single offices, a kitchenette, and male and female restrooms. Secure parking is available for staff and visitors. Strategically located with easy access to O.R. Tambo International Airport and major highways

Features

Zoning Industrial

Interior

Power 3 Phase Yes
 Power Amps 250

Exterior

Security Yes
 Open Parking Bays 6

Sizes

Floor Size 1,130m²
 Land Size 1,130m²
 Building Height 7m

