



Nathan Broodryk
0844223210
nathan@newpointproperty.co.za

Contact Head Office

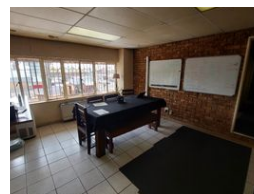
010 0354431

Office 40A
Eden Meadows Complex
1 Van Riebeeck Avenue
Greenstone
1609

820m² Warehouse To Let in Hennospark



Web Ref CL12801



R65,600 pm

Gross Monthly Rental R65,600 Excl. VAT



0 10

Versatile 820m² Warehouse in Hennospark – Prime Location for Your Business

This 820m² warehouse in the highly desirable Hennospark is situated in a secure park with excellent visibility from the main road and easy truck access. Featuring 3-phase power and an abundance of natural light, this space is ideal for a variety of industrial operations. The warehouse includes two large 5-meter roller doors and an open-plan design, providing flexible and efficient storage or workspace to suit your business needs.

The facility also boasts a well-designed office area, complete with three private offices, a spacious boardroom, and a welcoming reception area. With separate bathrooms and kitchenettes for both warehouse and office staff, this property offers convenience and comfort for all employees. Offering both functional industrial space and professional office settings, it's the perfect choice for

Features

Zoning Industrial

Interior

Floor Loading Cap. 1 Tn/m²
Power 3 Phase Yes
Power Amps 150

Exterior

Security Yes
Open Parking Bays 10

Sizes

Floor Size 820m²
Land Size 30,000m²

