



Nathan Broodryk
 0844223210
 nathan@newpointproperty.co.za

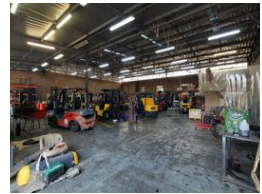
Contact Head Office

010 0354431

Office 40A
 Eden Meadows Complex
 1 Van Riebeeck Avenue
 Greenstone
 1609



Web Ref NB820EIP124A5



R65,600 pm

Gross Monthly Rental R65,600 Excl. VAT

0 10

820sqm warehouse

This 820 square meter warehouse in the highly sought-after Hennospark is situated in a secure park, offering prime visibility from the main road and convenient truck access. Perfect for a variety of operations, the property features 3-phase power, ensuring reliable energy for all your industrial needs. The warehouse is bathed in natural light, enhancing the working environment and boosting efficiency throughout the space. The layout includes two large 5-meter roller doors that facilitate smooth dispatch and delivery operations, while the open-plan design of the warehouse allows for flexible use of the entire floor area, making it an ideal choice for businesses looking for adaptable space.

The office area is thoughtfully designed to cater to all business needs, featuring three private offices, a spacious boardroom, and

Features

Zoning Industrial

Interior

Floor Loading Cap. 1 Tn/m²
 Power 3 Phase Yes
 Power Amps 150

Exterior

Security Yes
 Open Parking Bays 10

Sizes

Floor Size 820m²
 Land Size 30,000m²

