



Donovan Saunders

Candidate Property Practitioner
Registered with PPRA
(FFC 121 151 8)

0743713355

donovan@newpointproperty.co.za

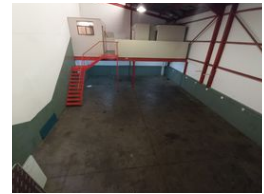
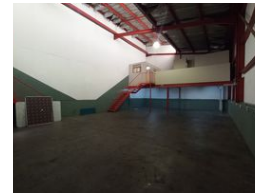
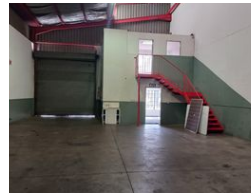
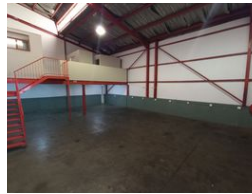
Contact Head Office

010 0354431

Office 40A
Eden Meadows Complex
1 Van Riebeeck Avenue
Greenstone
1609



Web Ref CL11431



R12,576 pm

Gross Monthly Rental R12,576 Excl. VAT

Monthly Rates R917 Excl. VAT

0 3

262sqm Industrial Warehouse in Jet Park, Boksburg

This well-maintained 262m² industrial mini-unit is available for lease at R12,576.00 (excluding VAT, security, and monthly services). Ideally located just off Griffiths Road in Jet Park, the property offers excellent accessibility to main roads and highways, ensuring smooth logistics and easy connectivity for your business. Situated within a secure industrial park, the unit provides a safe environment, allowing for worry-free operations.

The unit includes two offices—one on the ground floor, perfect for a reception area, and another on the first floor, both equipped with toilet facilities. The warehouse features good height, an on-grade roller shutter door for seamless loading and unloading, and

Features

Zoning Industrial

Interior

Power 3 Phase Yes
Power Amps 80

Exterior

Security Yes
Open Parking Bays 3

Sizes

Floor Size 262m²
Land Size 262m²
Building Height 8m

