

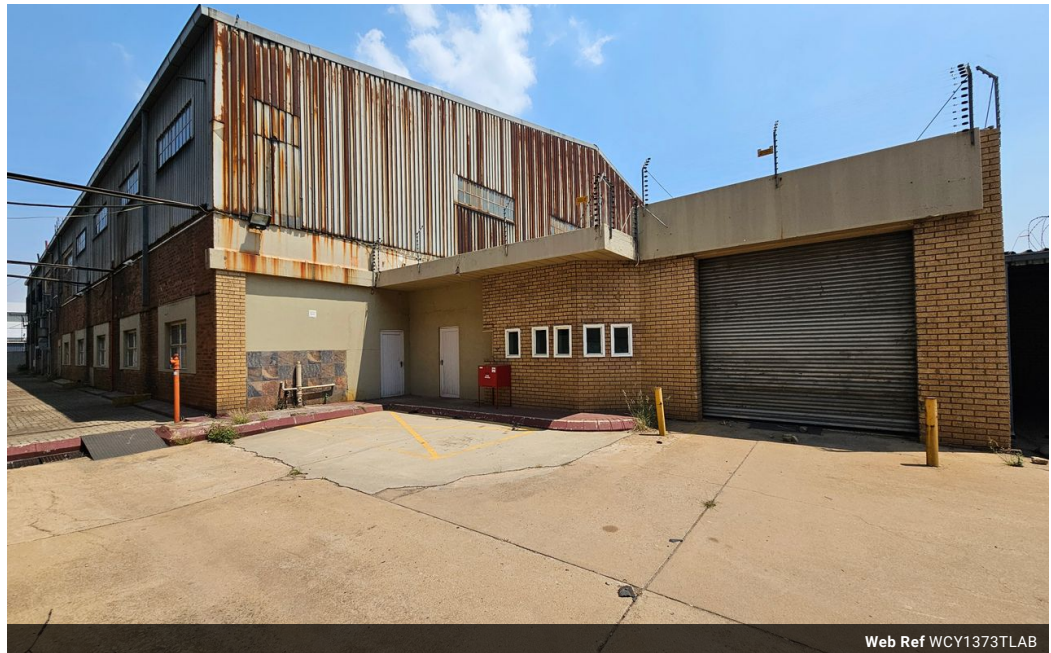


Wayne Churchyard
0817726802
wayne@newpointproperty.co.za

Contact Head Office

010 0354431

Office 40A
Eden Meadows Complex
1 Van Riebeeck Avenue
Greenstone
1609



Web Ref WCY1373TLAB



R68,650 pm

Gross Monthly Rental R68,650 Excl. VAT

 6  10

1373m² Factory To Let in Anderbolt

This 1373m² Factory is available immediately To Let in a secure industrial park in the popular Anderbolt area. The factory has good height to eaves and it is equipped with two large on grade roller shutter doors, large yard space and a ample 400 three phase power supply.

The factory offers multiple offices, reception area, kitchenette/canteen and ample ablution facilities for office and factory staff.

Features

Zoning Industrial

Interior

Power 3 Phase Yes
Power Amps 400

Exterior

Security Yes
Covered Parking Bays 6
Open Parking Bays 10

Sizes

Floor Size 1,373m²
Land Size 2,000m²

