



Tyrone Varga
Principal Property Practitioner
Registered with PPRA
(FFC 114 321 7)
072 869 3246

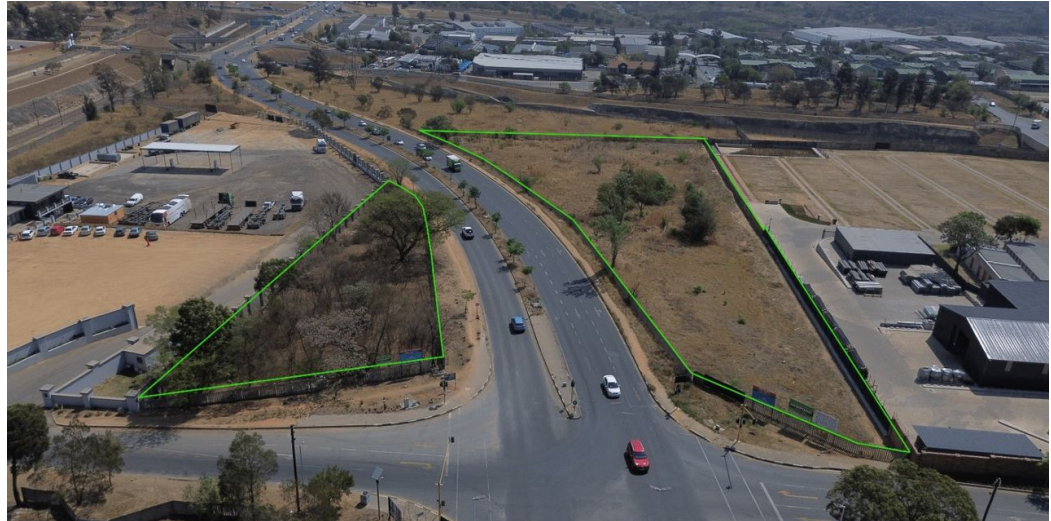
tyrone@newpointproperty.co.za

Contact Head Office

010 0354431

Office 40A
Eden Meadows Complex
1 Van Riebeeck Avenue
Greenstone
1609

NEW



Web Ref CL12953



R12,500,000

Monthly Levy R1 Excl. VAT

Monthly Rates R1 Excl. VAT

High-Exposure Industrial Land on Marlboro Road – Linbro Park

Don't miss this exceptional opportunity to acquire prime industrial land in the heart of Linbro Park. Comprising two fully serviced, flat stands of 8,731m² and 2,229m², this high-visibility site on busy Marlboro Road is ideal for warehousing, logistics, or industrial development. With prominent road frontage, your business is guaranteed to attract attention in one of Johannesburg's fastest-growing commercial nodes.

Perfectly located just off the N3 and with easy access to the N1, M1, and R21 highways, the property offers seamless connectivity for efficient operations. Ready for immediate development, this is a rare find for forward-thinking investors or growing businesses

Features

