



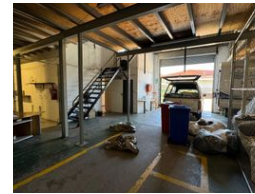
Ryan Van Rensburg
0846482022
ryan@newpointproperty.co.za

Contact Head Office
010 0354431

Office 40A
Eden Meadows Complex
1 Van Riebeeck Avenue
Greenstone
1609



Web Ref CL12143



R3,800,000



800sqm Freestanding Warehouse FOR SALE in Robertville

800sqm free-standing warehouse is now available for sale, offering a clean and well-maintained space with excellent access for seamless operations. The warehouse features a practical mezzanine level equipped with a 2-ton lift, providing efficient vertical storage and handling capabilities. With high-clearance ceilings and expansive floor space, it's an ideal property for businesses seeking flexible storage or industrial use.

In addition to the warehouse, the property includes a well-appointed office space and well-maintained ablution facilities, ensuring a comfortable working environment for staff and visitors. Located in a prime area with easy access to major roads, this property presents a fantastic opportunity for businesses looking to own a versatile and accessible industrial facility. Don't miss the chance

Features

Zoning Industrial

Interior

Floor Loading Cap. 1 Tn/m²
Power 3 Phase Yes

Sizes

Floor Size 800m²
Land Size 800m²

