



**Ryan Van Rensburg**  
 0846482022  
[ryan@newpointproperty.co.za](mailto:ryan@newpointproperty.co.za)

Contact Head Office

010 0354431

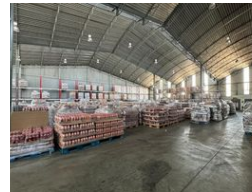
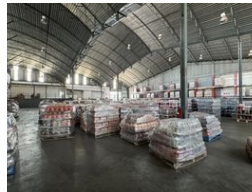
Office 40A  
 Eden Meadows Complex  
 1 Van Riebeeck Avenue  
 Greenstone  
 1609

1,721m<sup>2</sup> Warehouse For Sale in Manufacta

NEW



Web Ref CL12836



R6,900,000



1,721m<sup>2</sup> Warehouse To Let in Secure Industrial Park – Ideal for Logistics & Manufacturing

This 1,721m<sup>2</sup> warehouse is situated in a secure industrial park with 24-hour access control. It offers an efficient and streamlined layout suited for storage, manufacturing, or distribution. The space features excellent height to the eaves and a large roller shutter door, allowing for smooth access and maneuverability for trucks and delivery vehicles.

The park is designed with business efficiency in mind, providing strong infrastructure, wide internal roads, and seamless flow for logistics. Equipped with three-phase power, the warehouse can easily support high-energy operations and heavy machinery.

## Features

**Zoning** Industrial

### Interior

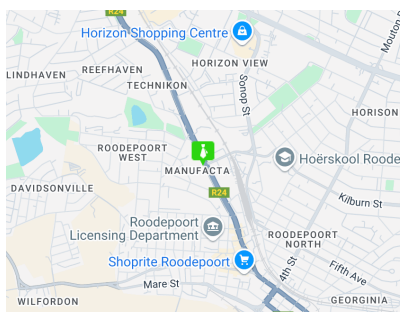
Floor Loading Cap. 1 Tn/m<sup>2</sup>  
 Power 3 Phase Yes

### Exterior

Security Yes

### Sizes

Floor Size 1,721m<sup>2</sup>  
 Land Size 1,721m<sup>2</sup>



<https://www.newpointproperty.co.za>