



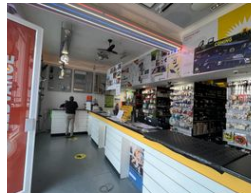
Ethan Willett
 0844752021
 ethan.w@newpointproperty.co.za

Contact Head Office
 010 0354431

Office 40A
 Eden Meadows Complex
 1 Van Riebeeck Avenue
 Greenstone
 1609



Web Ref FS1000SPEW



R6,000,000

4 10

Industrial property for Sale in Strijdompark, Randburg

Introducing a prime opportunity in the heart of Strijdompark, Randburg, a spacious warehouse boasting 1000 square meters of versatile commercial space. This property offers a strategic blend of functionality and convenience, with a front retail store section complemented by adjacent office space spanning 250 square meters, ideal for administrative tasks or client meetings. Beyond the retail and office area lies the expansive warehouse, providing ample room for storage, production, or distribution activities, complete with a loft for added storage capacity or potential office expansion.

Furthermore, this property caters to modern business needs with its provision of essential amenities, including three bathrooms

Features

Zoning Industrial

Interior

Floor Loading Cap. 10 Tn/m²
 Air Conditioning Yes
 Power 3 Phase Yes
 Power Amps 100

Exterior

Covered Parking Bays 4
 Open Parking Bays 10

Sizes

Floor Size 1,000m²
 Land Size 1,200m²

Extras

24 Hour Access 24 Hour Response Air Conditioner Loft Warehouse Shower Toilet and Basin

