



Martin Montgomery
 Candidate Property Practitioner
 Registered with PPRA (FFC 121 152 3)
 0818542055

martin@newpointproperty.co.za

Contact Head Office

010 0354431

Office 40A
 Eden Meadows Complex
 1 Van Riebeeck Avenue
 Greenstone
 1609

Make an Offer

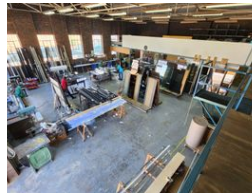
Market value
R5,000,000

Offers from
R4,900,000

Offers for this listing must be made in R50,000 increments



Web Ref CL10072



R5,000,000

16 10

1 152m² Exceptional Dual Warehouses in Prime Condition in Kya Sands, Randburg

Two impeccably maintained warehouses/factories, strategically nestled in the prime location of Kya Sand, offer a rare opportunity for distribution or warehousing needs. Each property boasts exceptional features, including high roller shutter doors for efficient loading and distribution, substantial height suitable for racking, and well-equipped, air-conditioned office spaces to enhance operational efficiency. Positioned between the N1 and N14 Highways, with seamless access to major transportation routes and connectivity to Malibongwe Highway and Lanseria Airport, these warehouses ensure convenience for logistical operations.

Security is paramount, with 24-hour armed security and an electric-linked fence with beams ensuring a safe environment for

Features

Zoning Industrial

Interior

Air Conditioning	Yes
Power 3 Phase	Yes
Power Amps	180

Exterior

Covered Parking Bays	16
Open Parking Bays	10

Sizes

Floor Size	1,152m ²
Land Size	2,000m ²
Building Height	8m

