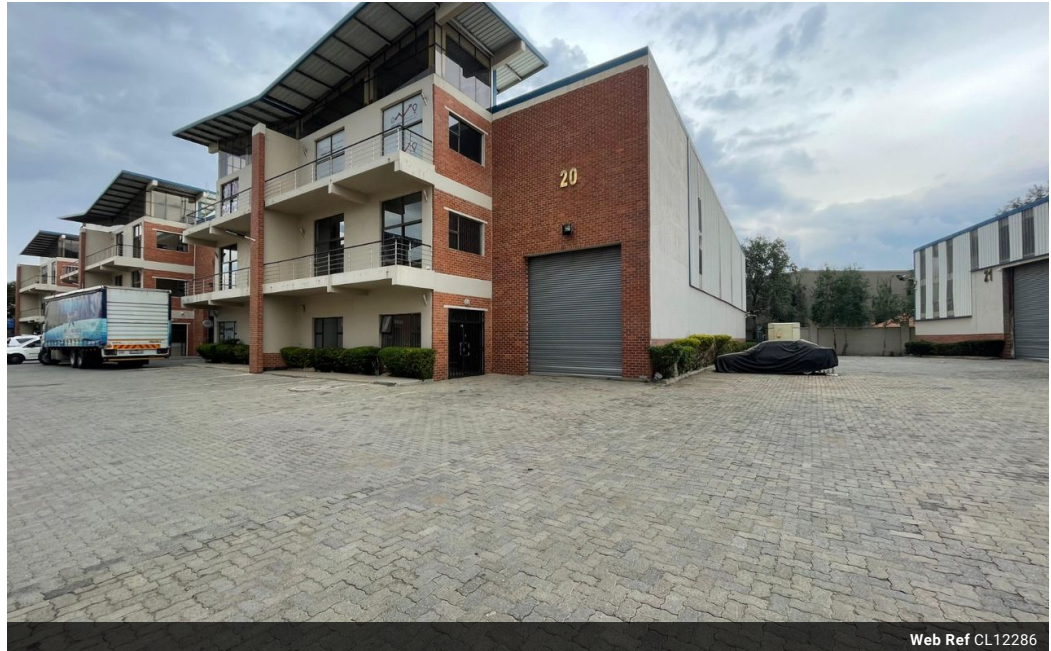




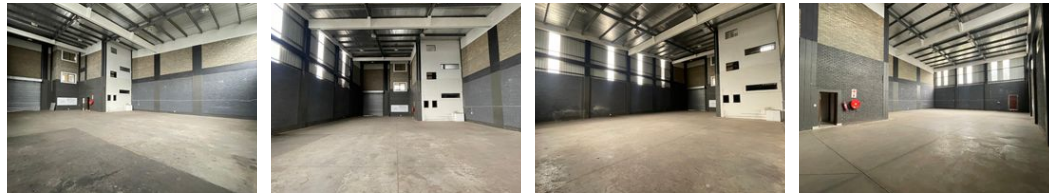
Warrick Botha
 0849752023
warrick@newpointproperty.co.za

Contact Head Office
 010 0354431

Office 40A
 Eden Meadows Complex
 1 Van Riebeeck Avenue
 Greenstone
 1609



Web Ref CL12286



R5,210,500

0 4

650m² Industrial Warehouse & Office Space in Halfway House, Midrand

This versatile 650m² industrial property in Halfway House, Midrand, offers a well-balanced mix of warehouse and office space, making it ideal for businesses requiring both operational and administrative areas. The warehouse boasts good height for efficient vertical storage, a large roller shutter door for seamless loading and unloading, and a reliable three-phase power supply—perfect for light manufacturing, storage, or distribution.

The office component provides a professional setting for administrative tasks, ensuring a functional and comfortable workspace for staff. Situated in the thriving industrial hub of Halfway House, this property enjoys excellent access to major transport routes, including the N1, allowing for easy connectivity between Johannesburg, Pretoria, and surrounding business nodes. Secure, well-

Features

Zoning Industrial

Interior

Floor Loading Cap. 1 Tn/m²
 Power 3 Phase Yes
 Power Amps 63

Exterior

Security Yes
 Open Parking Bays 4

Sizes

Floor Size 650m²
 Land Size 650m²

Extras

Balcony Guard Guard House

