



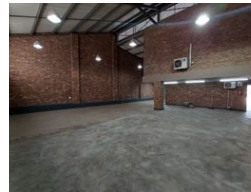
Nathan Broodryk
 0844223210
 nathan@newpointproperty.co.za

Contact Head Office
 010 0354431

Office 40A
 Eden Meadows Complex
 1 Van Riebeeck Avenue
 Greenstone
 1609



Web Ref CL12358



R2,625,000

0 30

Modern 327m² Warehouse – Smart, Secure & Efficient

This sleek 327m² warehouse is designed for seamless storage and distribution, combining modern office space with high-functioning industrial capabilities. Thoughtfully crafted for efficiency, it provides an adaptable solution for businesses looking to optimize their logistics in a dynamic environment.

Equipped with a reliable 60-amp power supply, the facility supports diverse machinery and operations. Large roller doors allow for smooth vehicle access, while a spacious yard ensures effortless truck maneuverability. With 10 dedicated parking bays and a strategic layout, this property offers the perfect balance of accessibility, efficiency, and modern design for forward-thinking

Features

Zoning Industrial

Interior

Floor Loading Cap. 1 Tn/m²
 Air Conditioning Yes
 Power 3 Phase Yes
 Power Amps 60

Exterior

Security Yes
 Open Parking Bays 30

Sizes

Floor Size 327m²
 Land Size 8,000m²

