



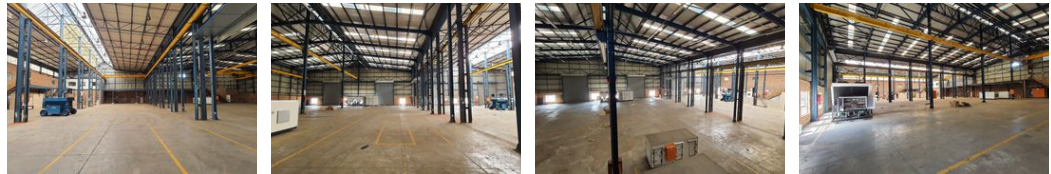
Marcel Carneiro
 Candidate Property Practitioner
 Registered with PPRA
 (FFC 120 075 3)
 0846932233
marcel@newpointproperty.co.za

Contact Head Office
 010 0354431

Office 40A
 Eden Meadows Complex
 1 Van Riebeeck Avenue
 Greenstone
 1609



Web Ref CL10937



R23,000,000

10 12

3 600m² Neat Industrial Warehouse with cranes in Spartan, Kempton Park

This impressive 3,600 sqm industrial warehouse, set on a 4,500 sqm stand in the highly sought-after Spartan industrial node, is now available for sale. The warehouse boasts excellent height to the eaves, allowing for efficient storage solutions, while abundant natural light floods the work area. Equipped with four large roller shutter doors for seamless access, the facility also features two overhead cranes—one with a 10-ton capacity and another with 12.5 tons. Additionally, the property is powered by three-phase electricity with an impressive 700 amps available, enhanced by backup batteries and solar power. Inside, you'll find a well-appointed office area that includes a kitchenette, ablutions, and a mezzanine level for extra storage space.

Features

Zoning Industrial

Interior

Air Conditioning	Yes
Power 3 Phase	Yes
Power Amps	700

Exterior

Covered Parking Bays	10
Open Parking Bays	12

Sizes

Floor Size	3,600m ²
Land Size	4,500m ²
Building Height	12m

