



**Jarred Purchase**  
Candidate Property  
Practitioner  
Registered with PPRA  
(FFC 118 480 9)  
**0763465458**

[jarred@newpointproperty.co.za](mailto:jarred@newpointproperty.co.za)

Contact Head Office

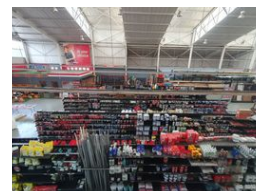
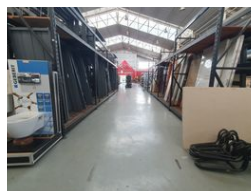
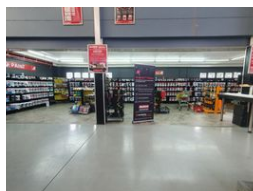
**010 0354431**

Office 40A  
Eden Meadows Complex  
1 Van Riebeeck Avenue  
Greenstone  
1609

1,690m<sup>2</sup> Warehouse For Sale in Ormonde



Web Ref CL11011



**R15,999,000**

12 40

1 690m<sup>2</sup> Immaculate warehouse with excellent highway exposure in Ormonde, Johannesburg

An immaculate 1690 sqm warehouse with excellent highway frontage and signage opportunities is now for sale in the highly sought-after Ormonde area. This versatile property can serve as either a warehouse or a retail facility due to its exceptional exposure. The warehouse features multiple on-grade roller shutter doors along the side, a covered dispatch/receiving area, and easy access into the facility. The spacious interior boasts excellent height to the eaves, fantastic natural lighting, and well-maintained, neatly painted floors.

The property includes a large paved yard at both the back and front, providing ample parking space and excellent access. The office component is neat and consists of several offices, a boardroom, and male and female toilets. Currently, there is a sales

## Features

**Zoning** Industrial

### Interior

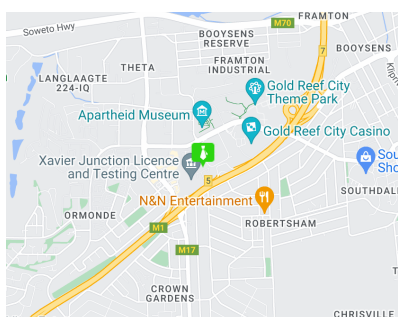
Air Conditioning	Yes
Power 3 Phase	Yes
Power Amps	200

### Exterior

Security	Yes
Covered Parking Bays	12
Open Parking Bays	40

### Sizes

Floor Size	1,690m <sup>2</sup>
Land Size	4,900m <sup>2</sup>
Building Height	9m



<https://www.newpointproperty.co.za>