



Robin Mulligan
 Candidate Property Practitioner
 Registered with PPRA
 (FFC 121 152 0)
 0713556301
robin@newpointproperty.co.za

Contact Head Office
 010 0354431

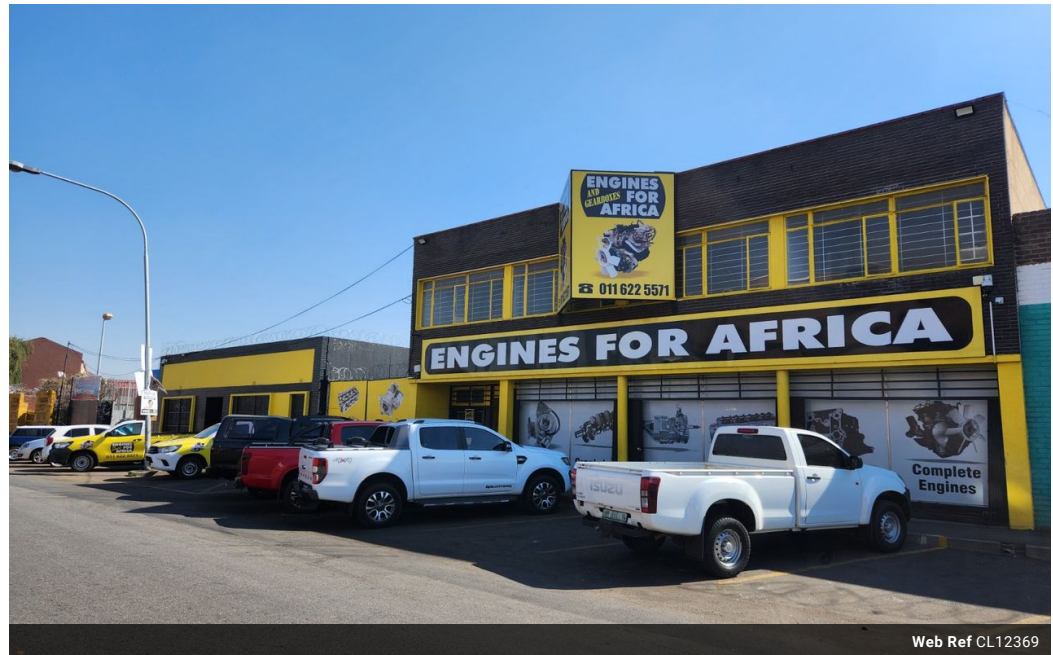
Office 40A
 Eden Meadows Complex
 1 Van Riebeeck Avenue
 Greenstone
 1609

Make an Offer

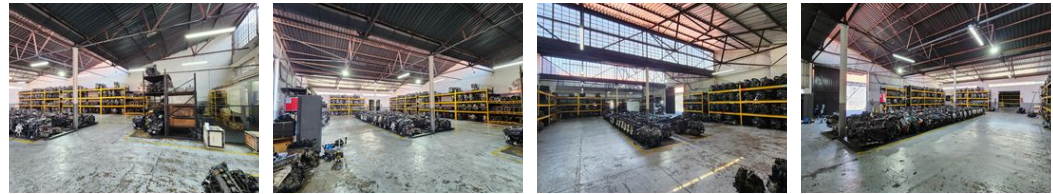
Market value
R3,000,000

Offers from
R4,800,000

Offers for this listing must be made in R10,000 increments



Web Ref CL12369



R3,000,000

6 15

1,600m² Freestanding Warehouse with Prime Main Road Exposure – Denver

Positioned in the heart of Denver's industrial hub, this 1,600m² freestanding warehouse offers excellent main road exposure and quick access to the M2 Highway. The property is divided into two separate warehouses, each featuring generous height, ample natural light, and a reliable three-phase power supply. A secure yard between the buildings provides additional storage or operational space, while front-facing parking ensures easy access for staff and visitors. This property also offers a large yard area which measures approximately 2000m² and can be used as a truck yard.

The office component includes a spacious open-plan reception area with a built-in sales counter, two private offices, a guest toilet,

Features

Zoning Industrial

Interior

Power 3 Phase Yes
 Power Amps 120

Exterior

Covered Parking Bays 6
 Open Parking Bays 15

Sizes

Floor Size 1,600m²
 Land Size 4,800m²
 Building Height 6m

