



Jarred Purchase

Candidate Property Practitioner
Registered with PPRAs
(FFC 118 480 9)

0763465458

jarred@newpointproperty.co.za

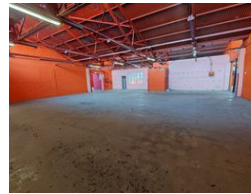
Contact Head Office

010 0354431

Office 40A
Eden Meadows Complex
1 Van Riebeeck Avenue
Greenstone
1609



Web Ref CL12433



R5,799,000

Monthly Rates R5,000 Excl. VAT

3 15

Versatile 1,963m² Industrial Warehouse in Booyens Reserve

Unlock new possibilities with this well-maintained 1,963m² industrial warehouse in the heart of Booyens Reserve. The main warehouse spans 1,265m², featuring excellent height, abundant natural light, and easy access via an on-grade roller shutter door. A powerful 250-amp three-phase power supply supports a range of industrial operations. The property also includes a 700m² basement storage area, accessible through a second roller door, providing additional space and operational flexibility.

The office component offers a professional environment with a welcoming reception, open-plan areas, private offices, and a boardroom. Staff amenities include a kitchen, restrooms, and dedicated staff quarters with a bedroom, shower, and toilet. The

Features

Zoning Industrial

Interior

Power 3 Phase Yes
Power Amps 250

Exterior

Covered Parking Bays 3
Open Parking Bays 15

Sizes

Floor Size 1,963m²
Land Size 2,200m²
Building Height 6m

