



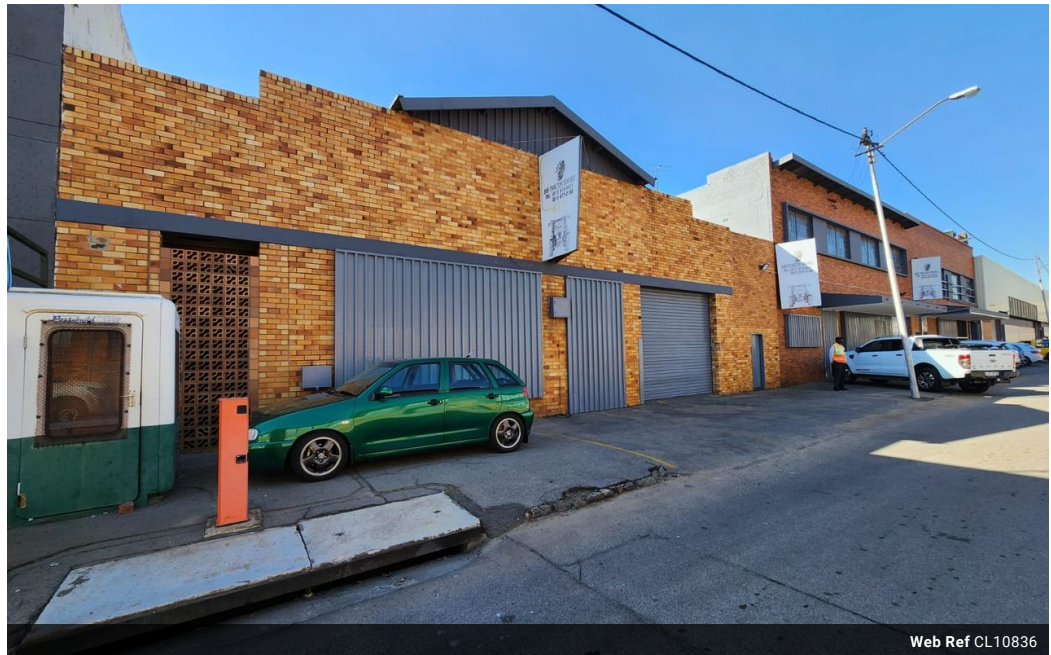
Robin Mulligan
 Candidate Property Practitioner
 Registered with PPRA (FFC 121 152 0)
 0713556301

robin@newpointproperty.co.za

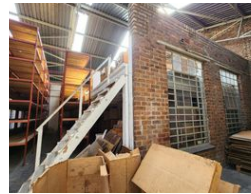
Contact Head Office

010 0354431

Office 40A
 Eden Meadows Complex
 1 Van Riebeeck Avenue
 Greenstone
 1609



Web Ref CL10836



R2,800,000

0 5

700m² Warehouse in Wychwood, Germiston

Presenting a tidy and secure 700m² warehouse for lease in Wychwood, Germiston. Located within an access-controlled enclosure with 24-hour security, this property ensures peace of mind for your operations. It offers easy access to major highways and nearby shopping facilities, and is within walking distance to public transport, making convenience a top priority. The warehouse features good height, excellent natural light, and a reliable 3-phase power supply, with a large roller shutter door for smooth truck access. Optionally fully racked, this versatile space can accommodate various storage needs.

The office section includes both individual and open-plan spaces, complete with a reception area for efficient administrative

Features

Zoning Industrial

Interior

Power 3 Phase Yes
 Power Amps 100

Exterior

Security Yes
 Open Parking Bays 5

Sizes

Floor Size 700m²
 Land Size 700m²
 Building Height 7m

