



William Christie
 Candidate Property Practitioner
 Registered with PPRA
 (FFC 121 152 2)
 0740552244

william@newpointproperty.co.za

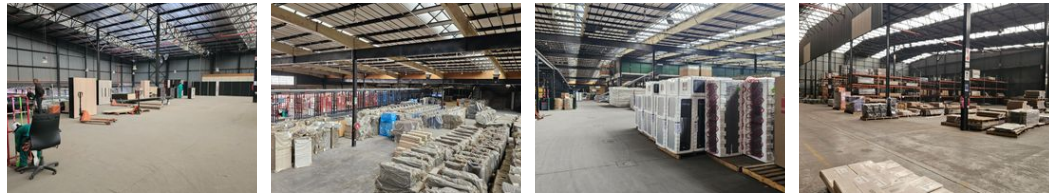
Contact Head Office

010 0354431

Office 40A
 Eden Meadows Complex
 1 Van Riebeeck Avenue
 Greenstone
 1609



Web Ref CL10838



R115,000,000



32 000sqm Warehouse in Roodekop, Germiston

Situated in the vibrant center of Roodekop, this expansive warehousing and manufacturing facility is an exceptional opportunity. Upon entry through the double gate, a spacious rectangular loading yard adjoins the primary warehouse. Inside, the warehouse features numerous loading docks, generous height, and a fully-equipped sprinkler system with a tank and pump room. The layout ensures seamless receiving and dispatch operations from both ends of the property. Additionally, a sizable surplus yard facilitates convenient truck access and loading. With a robust 1MVA electricity supply, the facility is well-suited for intensive operations.

Inside, expansive open-plan offices serve dual roles as supplementary storage and work areas, with ample staff facilities

Features

Zoning Industrial

Interior

Floor Loading Cap. 10 Tn/m²
 Power 3 Phase Yes
 Power Amps 1700

Sizes

Floor Size 32,000m²
 Land Size 46,000m²
 Building Height 7m

