



Brandon Whitehead
 Candidate Property Practitioner
 Registered with PPRA
 (FFC 121 151 9)
 0817743977

brandon@newpointproperty.co.za

Contact Head Office

010 0354431

Office 40A
 Eden Meadows Complex
 1 Van Riebeeck Avenue
 Greenstone
 1609

Make an Offer

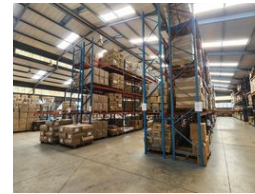
Market value
R57,900,000

Offers from
R57,000,000

Offers for this listing must be made in R100,000 increments



Web Ref CL12173



R57,900,000

15 50

8,120m² Industrial Facility with Showroom & Offices in Meadowdale

This immaculate 8,120m² freestanding industrial property, set on a 12,800m² stand, offers a versatile space ideal for logistics, distribution, warehousing, or manufacturing. The facility includes two factories, a modern office component, a spacious showroom, and a welcoming reception area. With two truck access points, impressive ceiling height, abundant natural light, and a large three-phase power supply, this property is designed for seamless operations. Ample ablution facilities, a kitchenette, and generous parking further enhance its functionality.

Situated in the sought-after Meadowdale area, this property enjoys prime access to major transport routes, including the N12, N17, R21, and R24 highways. Its strategic location within Gauteng's East Rand ensures exceptional connectivity and efficiency for

Features

Zoning Industrial

Interior

Air Conditioning Yes
 Power 3 Phase Yes

Exterior

Covered Parking Bays 15
 Open Parking Bays 50

Sizes

Floor Size 8,120m²
 Land Size 12,800m²
 Building Height 8m

