



William Christie
 Candidate Property Practitioner
 Registered with PPRRA
 (FFC 121 152 2)
 0740552244

william@newpointproperty.co.za

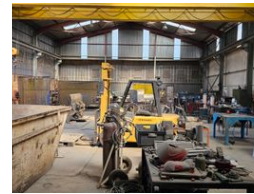
Contact Head Office

010 0354431

Office 40A
 Eden Meadows Complex
 1 Van Riebeeck Avenue
 Greenstone
 1609



Web Ref CL12606



R3,500,000

Monthly Levy R1 Excl. VAT

Monthly Rates R1 Excl. VAT



Free-Standing Property with 10-Ton Crane and Ample Yard Space in Knights

This free-standing property, located in Knights, offers a variety of standout features. A key highlight is the inclusion of a 10-ton crane, ideal for heavy-duty tasks. The building is equipped with 3-phase power (approximately 63 amps), which can be easily upgraded if needed. Access for trucks is convenient, thanks to a sizable door leading into the factory area. Additionally, the property offers ample yard space, and the warehouse can be divided into two separate sections.

The workshop enjoys excellent natural lighting, reducing the need for artificial lighting. The building is well-secured, and staff ablution facilities are conveniently located within the warehouse. Inside the office area, you'll find a sales counter, boardroom, and

Features

Zoning Industrial

Interior

Floor Loading Cap. 5 Tn/m²
 Power 3 Phase Yes
 Power Amps 150

Sizes

Floor Size 850m²
 Land Size 1,050m²
 Building Height 7m

