



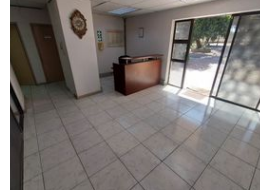
Wayne Churchyard
0817726802
wayne@newpointproperty.co.za

Contact Head Office
010 0354431

Office 40A
Eden Meadows Complex
1 Van Riebeeck Avenue
Greenstone
1609



Web Ref CL12422



R10,000,000

20 10

24,000m² Truck Yard for Sale in Prime Vulcania Location

Seize this rare opportunity to own a 24,000m² truck yard in the sought-after Vulcania area—perfectly positioned just off the N17 highway for seamless access to major transport routes. Tailored for logistics and transportation businesses, the property is fully equipped with essential amenities, including a wash bay, workshop, diesel tanks, and dedicated driver rooms with change facilities and ablutions—offering a comprehensive solution for efficient operations.

The site also boasts a well-maintained office component featuring a welcoming reception area, a fully equipped boardroom, multiple private offices, and ample on-site parking. This versatile property is designed to enhance business functionality and offers

Features

Zoning Industrial

Interior		Exterior		Sizes	
Power 3 Phase	Yes	Security	Yes	Floor Size	845m ²
		Covered Parking Bays	20	Land Size	24,000m ²
		Open Parking Bays	10		

