



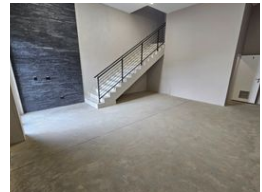
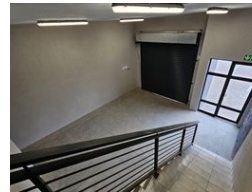
Wayne Churchyard
0817726802
wayne@newpointproperty.co.za

Contact Head Office
010 0354431

Office 40A
Eden Meadows Complex
1 Van Riebeeck Avenue
Greenstone
1609



Web Ref CL12722



R2,235,000



Modern Industrial Unit with Race Track Views – Prime Morehill Location!

Located in the sought-after Morehill area, this brand-new 179m² unit is now available for sale in a secure park with 24-hour security. Designed for efficiency, the warehouse features excellent height to the eaves, ample natural light, and a large on-grade roller shutter door for seamless access. A robust three-phase power supply supports various industrial operations, making this a versatile space for businesses looking to grow.

Inside, the unit offers a stylish reception area, a spacious open-plan office, a well-equipped kitchenette, and ablution facilities for staff and visitors. A unique highlight is the expansive balcony overlooking the thrilling Formula K race track—adding an inspiring touch to the workspace. With quick access to the N12 and R21 highways via Snake Road, this prime property offers convenience,

Features

Zoning Industrial

Interior		Exterior		Sizes	
Power 3 Phase	Yes	Security	Yes	Floor Size	179m ²

