



Wayne Churchyard  
0817726802  
wayne@newpointproperty.co.za

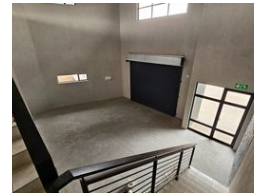
Contact Head Office  
010 0354431

Office 40A  
Eden Meadows Complex  
1 Van Riebeeck Avenue  
Greenstone  
1609

NEW



Web Ref CL12712



R2,837,500



## Brand-New 227m<sup>2</sup> Industrial Unit in Prime Morehill Location

This newly built 227m<sup>2</sup> industrial unit in the sought-after Morehill area offers a high-quality, functional space for businesses. Featuring excellent height to the eaves, ample natural light, a reliable three-phase power supply, and a large on-grade roller shutter door, this unit is designed for seamless operations and accessibility.

The property includes a spacious reception area, a large open-plan office, a kitchenette, and modern ablution facilities. A standout feature is the expansive balcony overlooking the Formula K race track. With 24-hour security, easy access to Snake Road off-ramp, and in proximity to the N12 and R21 highways, this unit provides a secure and well-connected business environment. Contact us

## Features

Zoning Industrial

### Interior

Power 3 Phase Yes

### Exterior

Security Yes

### Sizes

Floor Size 227m<sup>2</sup>

