



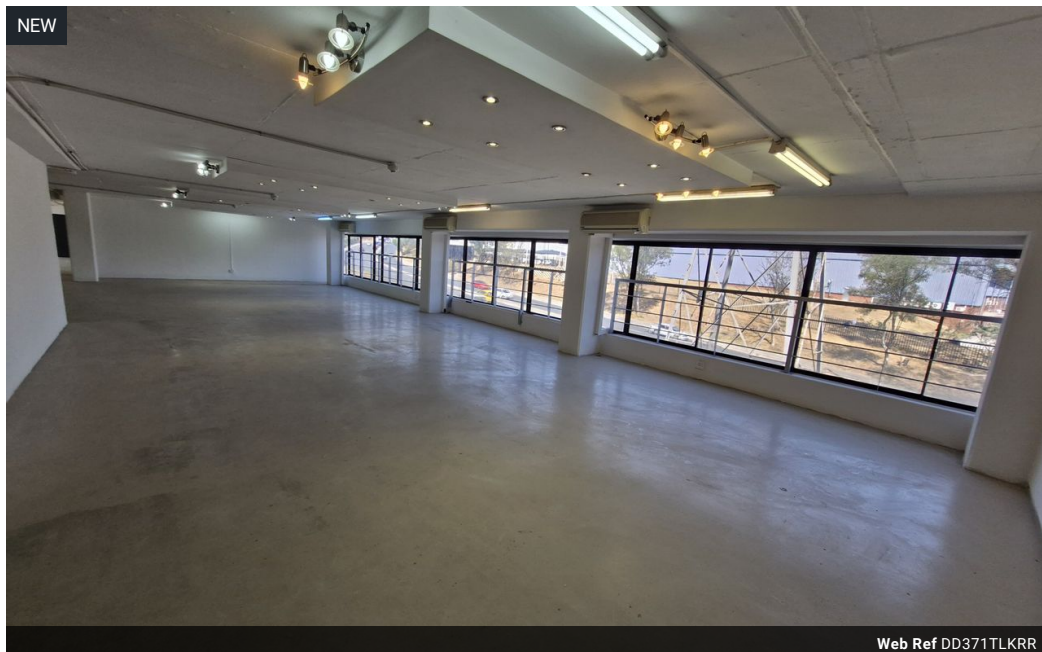
Dane Davids  
0844782022  
dane@newpointproperty.co.za

Contact Head Office

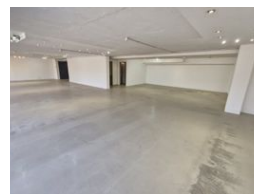
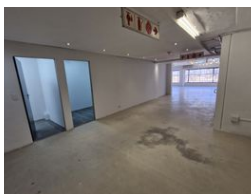
010 0354431

Office 40A  
Eden Meadows Complex  
1 Van Riebeeck Avenue  
Greenstone  
1609

371m<sup>2</sup> Showroom To Let in Kramerville



Web Ref DD371TLKRR



R42,665 pm

**Gross Monthly Rental** R42,665 Excl. VAT  
**Monthly Rates** R1 Excl. VAT

**Monthly Levy** R1 Excl. VAT

0 0

sought after showroom and office space in the showroom hub of Kramerville

This third-floor showroom to let in Kramerville Corner, Sandton, offers a premium location for design, décor, or creative businesses. Positioned in the heart of Kramerville's vibrant design district, the space boasts panoramic views and abundant natural light, creating an inspiring and welcoming environment for clients and staff alike.

The open-plan layout allows for flexible use and stylish presentation of products or services. Large windows frame the surrounding cityscape, enhancing the upscale feel of the space. With easy access from main roads and close proximity to popular showrooms and cafés, this is an ideal opportunity for brands looking to position themselves in one of Sandton's most sought-after creative

## Features

**Zoning** Commercial

### Interior

Floor Loading Cap. 5 Tn/m<sup>2</sup>  
Air Conditioning Yes  
Power Amps 60

### Sizes

Floor Size 371m<sup>2</sup>  
Land Size 6,000m<sup>2</sup>



<https://www.newpointproperty.co.za>