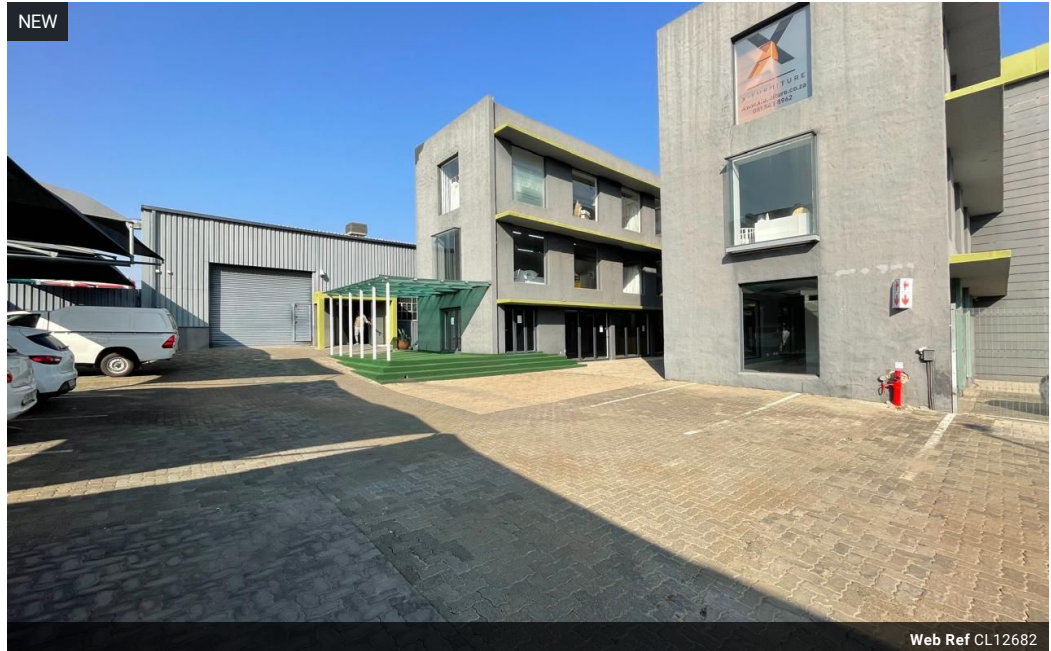




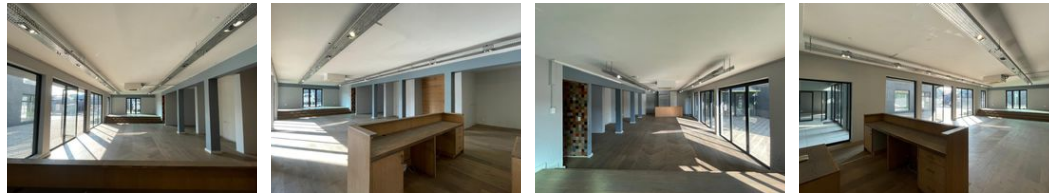
Dane Davids
 0844782022
 dane@newpointproperty.co.za

Contact Head Office
 010 0354431

Office 40A
 Eden Meadows Complex
 1 Van Riebeeck Avenue
 Greenstone
 1609



Web Ref CL12682



R33,075 pm

Gross Monthly Rental R33,075 Excl. VAT

0 2

Premium 245m² Showroom in Kramerville – High Visibility & Versatile Space

This stylish 245m² showroom in Kramerville, Sandton, is designed to enhance your brand presence with a spacious, well-lit layout perfect for retail displays or an upscale office setup. Featuring an open-plan showroom floor, dedicated office areas for administration or private meetings, and a fully equipped kitchen with modern bathrooms, this space offers both functionality and sophistication.

What sets this property apart is its abundant natural lighting and prime main road exposure, ensuring maximum visibility and an inviting atmosphere for clients. Located in Sandton's premier design and business district, this showroom provides an excellent opportunity for businesses looking to stand out in a high-traffic, sought-after commercial hub. Contact us today to secure this

Features

Zoning Commercial

Interior		Exterior		Sizes	
Power 3 Phase	Yes	Open Parking Bays	2	Floor Size	245m ²
				Land Size	245m ²

